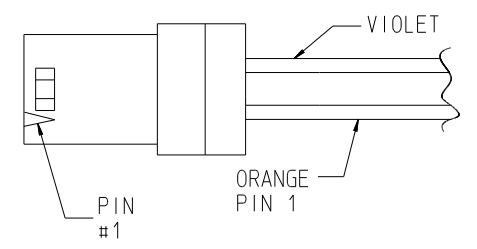
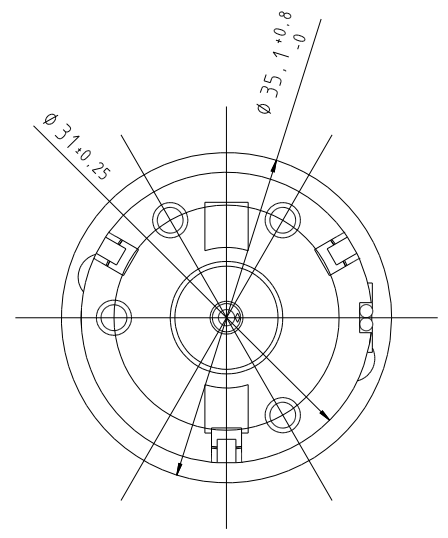
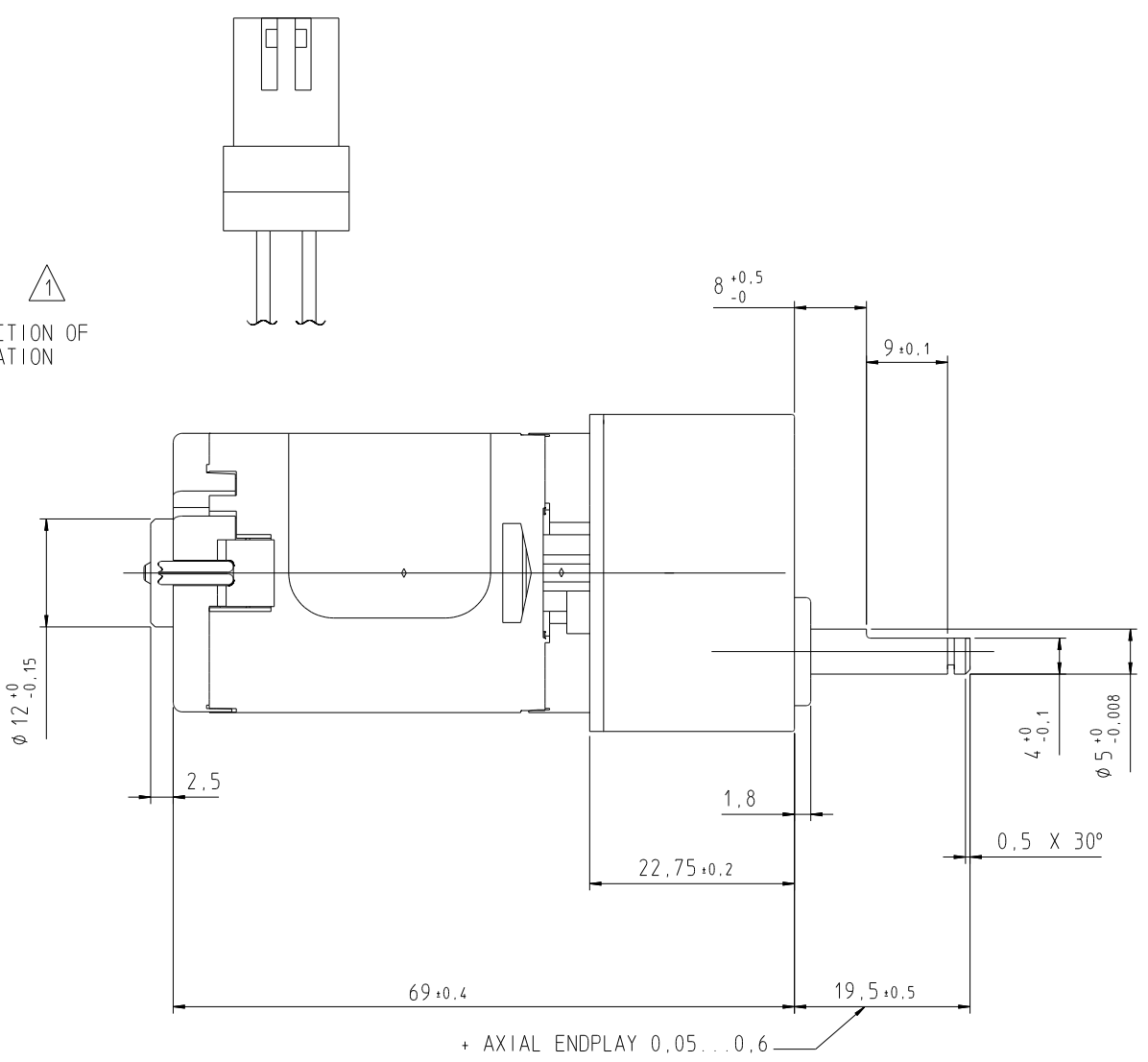
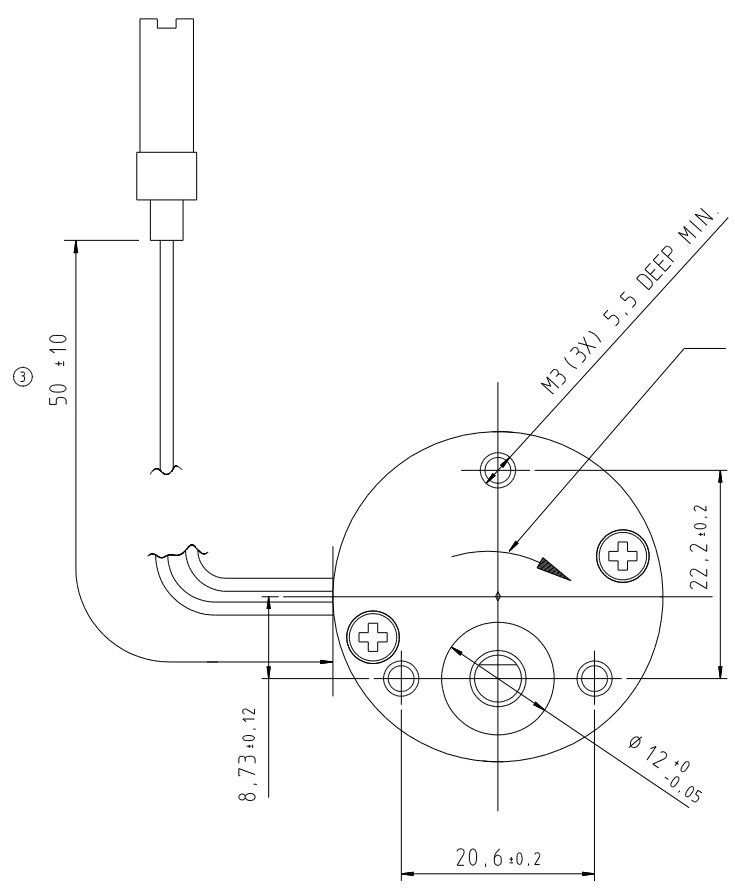


Tolerances Unless Otherwise Stated			Fillet radius and chamfer height			Surface Finish	Dimension	Tolerance
up to 6	over 6 up to 30	over 30 up to 120	up to 3	over 3 up to 6	over 6 up to 30			
+0,1	+0,2	+0,3	+0,2	+0,5	+1			

NOTES:
 ⚠ DIRECTION OF ROTATION WITH POSITIVE VOLTAGE APPLIED TO PIN #1 OF CONNECTOR (ORANGE LEAD).



+ AXIAL ENDPLAY 0,05 ... 0,6

GEAR RATIO 93:1
 U 24 VOLT- PI - KN 115

ISO-E		Material Number		Internal	
		X		X	
BUEHLER PRODUCTS INC. CARY, NC 27512		Date	17JUN97	Substituted For	
Buehler		Drawn	HERRING		
		Check	JEH	Replaced By	
		Appr.			
Title GEAR MOTOR DIMENSIONS				Scale 2:1	
3		REVISED PER ECO 3717-151	16MAY00	JEH	
2		REVISED PER ECO 3869-206	01DEC99	JEH	
1		RELEASE PER ECO 3869-126	17JUN97	JEH	
DI		Change Only With CAD	Date	Name	Use
		Drawing Number 7.27.253.KN (2)		Sheet 1 of 1	

THIS DOCUMENT AND ALL INFORMATION THEREIN CONTAINED ARE OUR EXCLUSIVE PROPERTY. THE RECIPIENT AGREES NOT TO REPRODUCE, COPY, USE OR TRANSMIT THIS DOCUMENT AND/OR THE INFORMATION THEREIN CONTAINED FOR ANY PURPOSE, EXCEPT WITH OUR WRITTEN PERMISSION.

FÜR DIESE ZEICHNUNG BEHALTEN WIR UNS ALLE RECHTE NACH DIN 34 FÜR DRAHWING CREATED WITH ISO STANDARDS

